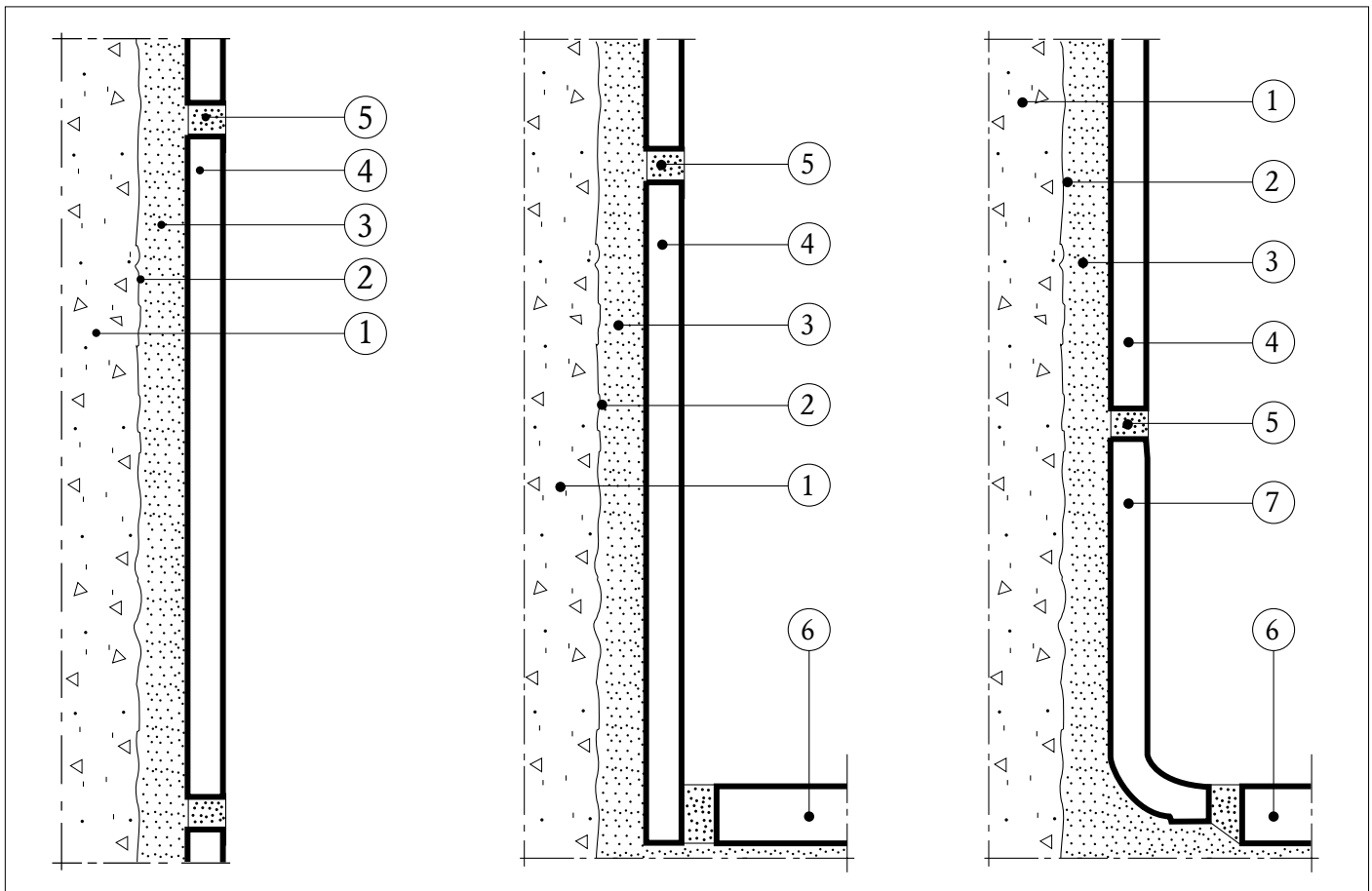


Applications

Wall type V1 is suitable for internal or external cladding with a maximum height of 4 metres.

Design



Typical cross-section.

Legend

1. Base
2. Priming mortar
3. Setting mortar
4. Wall tiles
5. Joints
6. Floor tiles
7. Skirtings

1. Base

The base should be lightweight concrete, brickwork or concrete cast against timber shuttering. The base should be thoroughly cleaned. A dried out base is moistened so as not to suck up water strongly or unevenly.

2. Priming mortar

The priming mortar should normally be lime/cement/sand 10/90/325. The priming mortar for particularly wet areas such as swimming pools should be cement/sand 100/250.

3. Setting mortar

The setting mortar should normally be about 15 mm thickness. The thickness may vary between 10 to 25 mm for smaller areas. If the irregularity is more, the base has to be levelled off.

The setting mortar should normally be lime/cement/sand 35/65/550. The setting mortar for particularly wet places such as swimming pools should be cement/sand 100/400.

Outdoor cladding on a base of lightweight concrete with a density below 500 kg/m³, is reinforced and anchored with welded reinforcement netting with a wire thickness of 2.5 mm and a mesh size of 100–200 mm. The reinforcement is fixed into the loadbearing frame with minimum four clamps per m² of 3 mm diameter stainless steel.

4. Wall tiles

Ceramic wall tiles.

5. Joints

CC Höganäs KlinkerFog.

6. Floor tiles

Ceramic floor tiles.

7. Skirtings

Coved or plain skirting tiles.