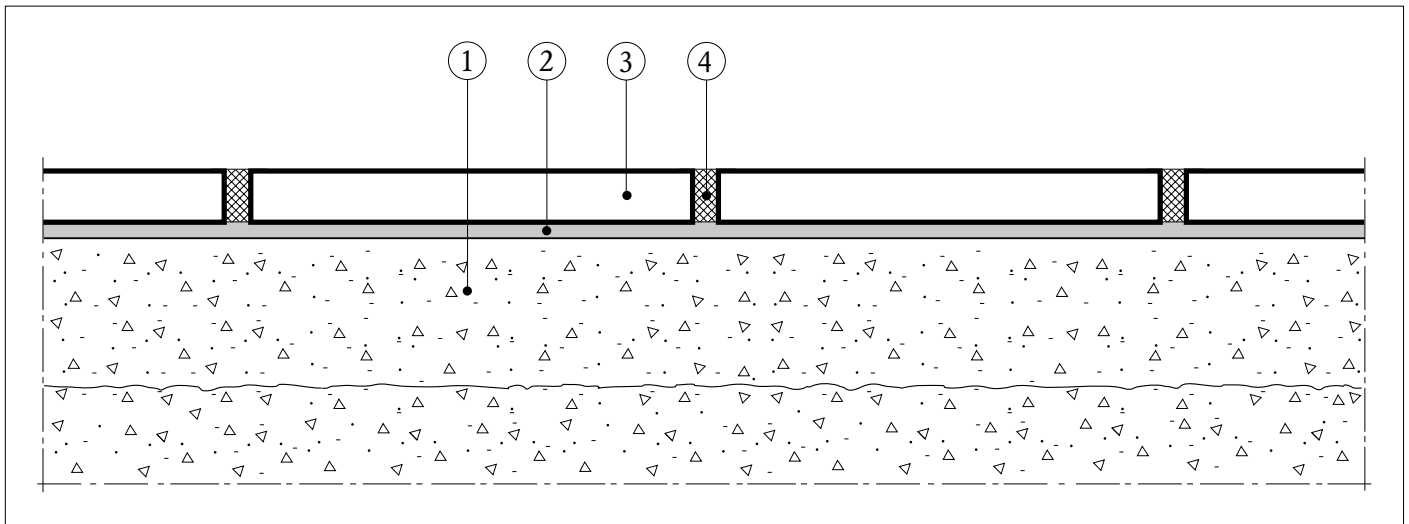


Applications

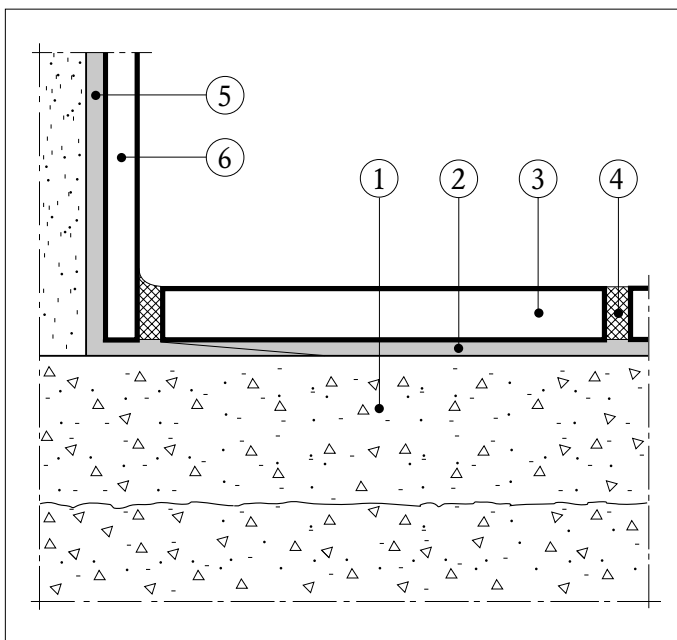
Standard Design, Code G6 is recommended for liquid proof floors influenced by temperature- and moisture variations, chemical attacks and deformations due to shrinkage and creeping in suspended concrete slabs. It is also recommended in cases where there is a demand for producing a water proof, thin and light ceramic floor

within a minimum of time. Examples of application are production areas in the chemical and food industries, caterings, wet areas in public baths. Tiles must have a low water absorption. Max. allowed moisture content in the sub-floor is appr. 6 % by weight.

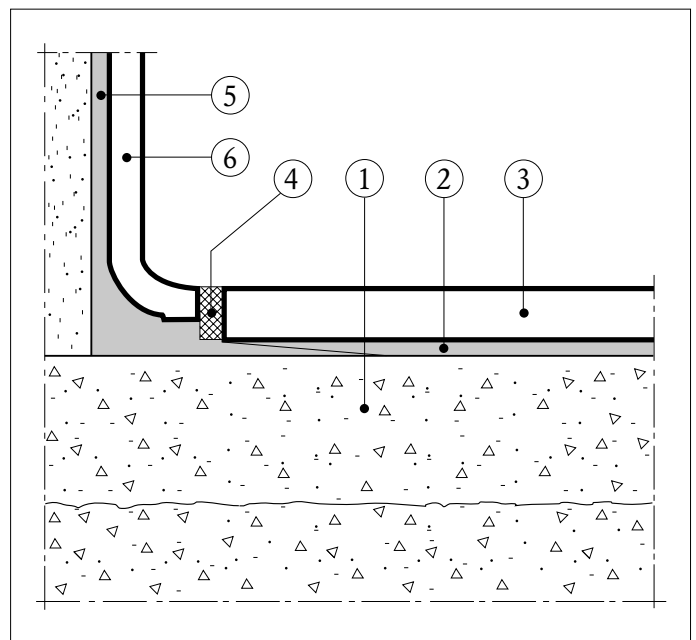
Design



Typical cross-section.



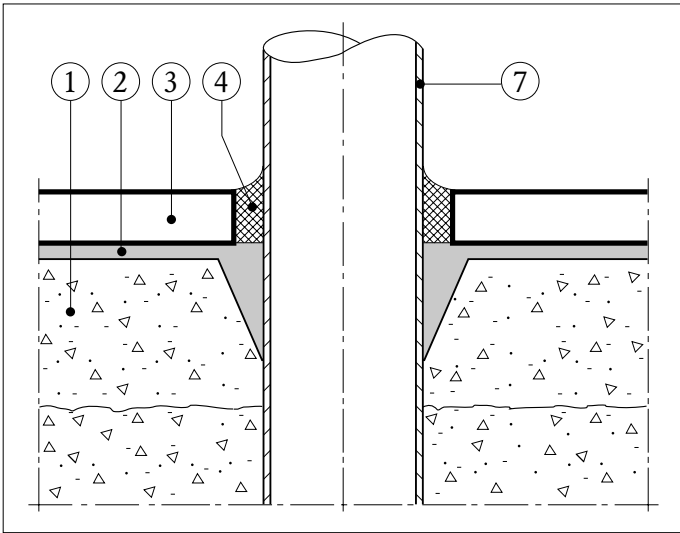
Cross-section through wall/floor.



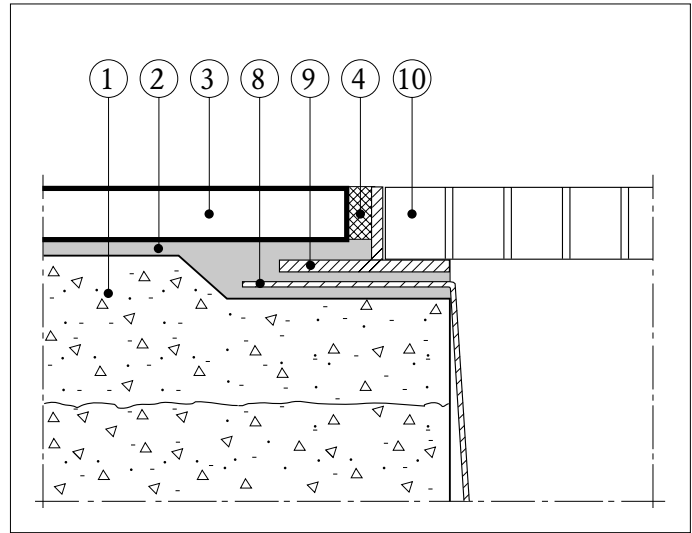
Cross-section through wall/floor with cove skirting tile.

Legend

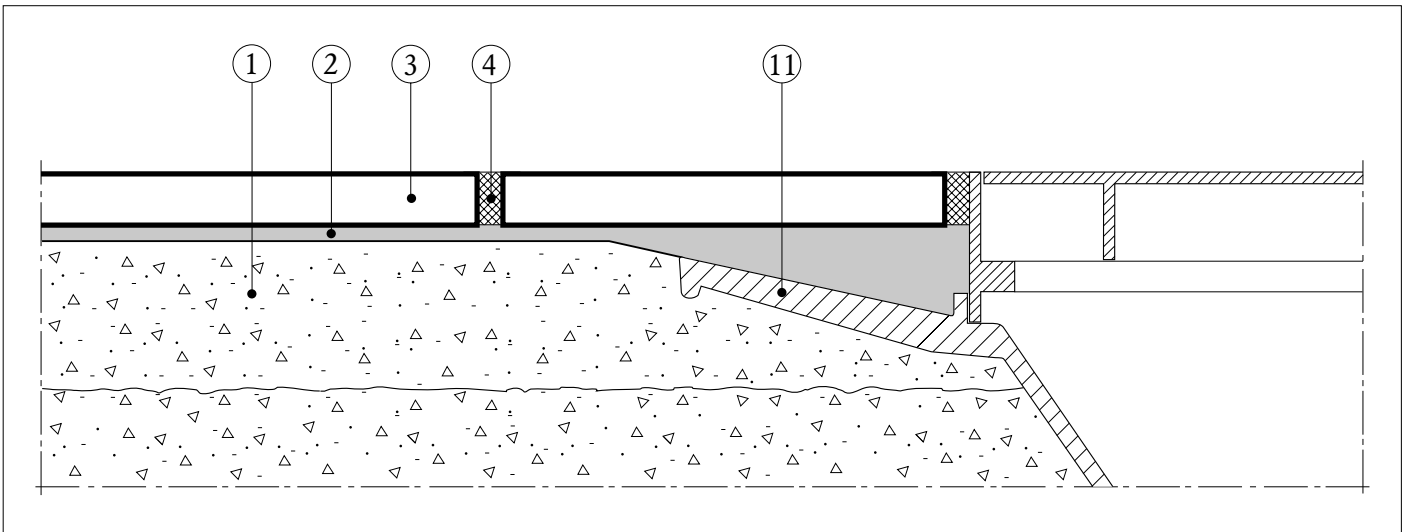
1. Sub-floor
2. Adhesive
3. Tiles
4. Joints
5. Adhesive
6. Skirtings



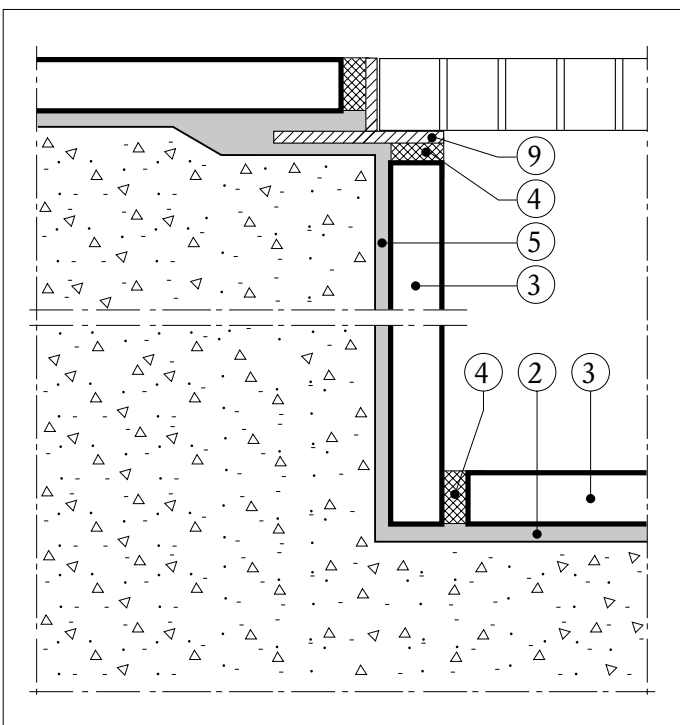
Cross-section through pipe.



Cross-section through drainage gully made of stainless steel.



Cross-section through floor well.



Cross-section through flooring duct with ceramic tiles.

Legend

1. Sub-floor
2. Adhesive
3. Tiles
4. Joints
5. Adhesive
7. Pipe sleeve
8. Stainless steel sheet
9. Edge protection
10. Floor grille
11. Floor well

1. Sub-floor

The floor base is to be concrete with a wood-floated surface. Unevennesses in the base must not exceed ± 3 mm with lengths of 2 m or ± 5 mm with lengths of 4 m. Special installations against wells and ducts are carried out in the sub-floor.

2. Adhesive

CC Höganäs adhesive Habenit 48, thickness 4 mm.

3. Tiles

CC Höganäs ceramic tiles (extruded tiles or dry pressed, unglazed floor tiles), thickness 10–20 mm.

4. Joints

Joint width 5–7 mm. Joints should, as a rule, be of the flexible type, such as CC Höganäs epoxy-based grout Habenit 63 in certain cases other types of grout also can be used.

In doubtful cases the choice of the correct grout should be made in consultation with CC Höganäs.

5. Adhesive

CC Höganäs adhesive Habenit 48, thickness 4 mm.

6. Skirtings

Cove skirting tiles or plain skirting tiles.

7. Pipe sleeve

8. Stainless steel sheet

Flanged stainless steel sheeting.

9. Edge protection

Edge protection is carried out by means of welded stainless steel plates, thickness approx. 4.5 mm. The width of the horizontal steel strip should be about 60 mm.

10. Floor grille

11. Floor well

Floor well with protruding flange.

When working in chemical-resistant tanks and basins or similar, first an approx. 2 mm thick isolation should be done. Lining should then be done in a further 2–3 mm covering layer.

Safety precautions

Epoxy-based compound should be handled or applied ONLY by personnel who have received appropriate training regarding the product. Deliveries of large quantities include a special safety package which containing a list of safety precautions and an initial supply of plastic gloves, skin cream, skin-cleaning agent and fatty cream. This package is available on special order (prod. no. FB 130).

The main safety precautions include:

- Satisfactory ventilation of the work place.
- Work clothes should be fitted with woven-plastic arm- and knee-guards.
- Plastic gloves should be used.
- Eye flushing and cleaning facilities should be available at the work place.

