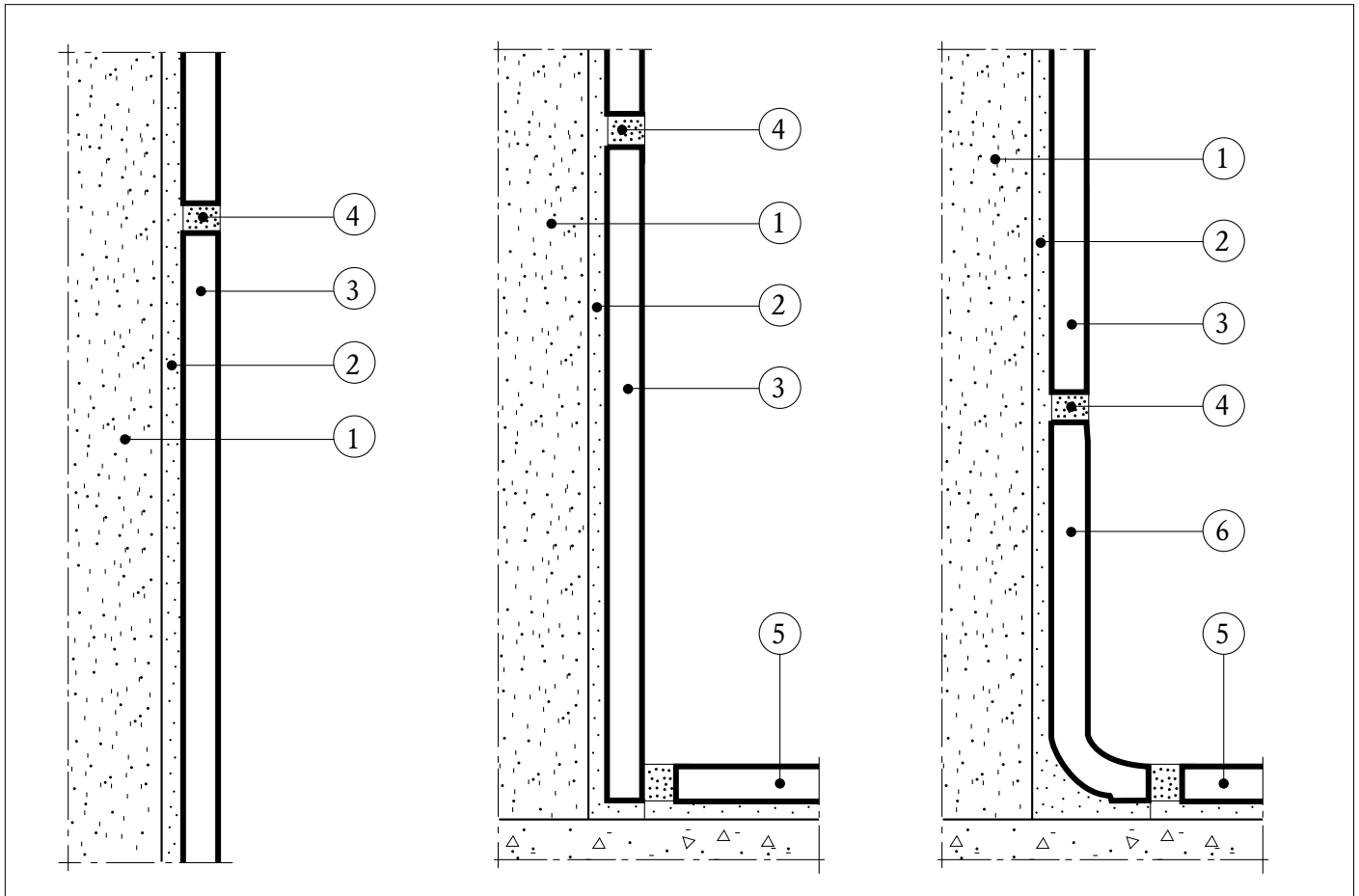


Applications

Wall type V 3 is suitable for internal or external cladding with a maximum height of 4 metres.

Design



Typical cross-section.

Legend

- | | |
|---------------|----------------|
| 1. Subsurface | 4. Joints |
| 2. Adhesive | 5. Floor tiles |
| 3. Wall tiles | 6. Skirtings |

1. Subsurface

The subsurface should be concrete, lightweight concrete, plaster or plasterboard. The surface of the subsurface should be as smooth as that obtained by casting against smooth shuttering. Care must be taken to ensure that no oil, grease, dust or other impurities are present. The concrete should be at least 3 month old when using FB 13 or FB 14 and at least 6 month old when using FB 11 and at least 12 month old when using FB 12.

2. Adhesive

CC Höganäs Fix FB 12 alt. KakelFix FB 11, RotFix FB 13 or SnabbRotFix FB 14. Thickness appr. 3 mm. The adhesive is prepared according to the instructions on the packages. When tiling large size tiles $\geq 250 \times 250$ mm the back of the tile must be coated with a thin but fully covering layer of the adhesive prior to the tile being pressed or knocked into the previously applied adhesive (the so called buttering/floating method). Outdoor wall tiling should always be buttering/floating method.

3. Wall tiles

Ceramic wall tiles.

4. Joints

CC Höganäs KakelFog for highly absorbent tiles. CC Höganäs KlinkerFog for clinker tiles.

5. Floor tiles

Ceramic floor tiles

6. Skirtings

Coved or plain skirting tiles.