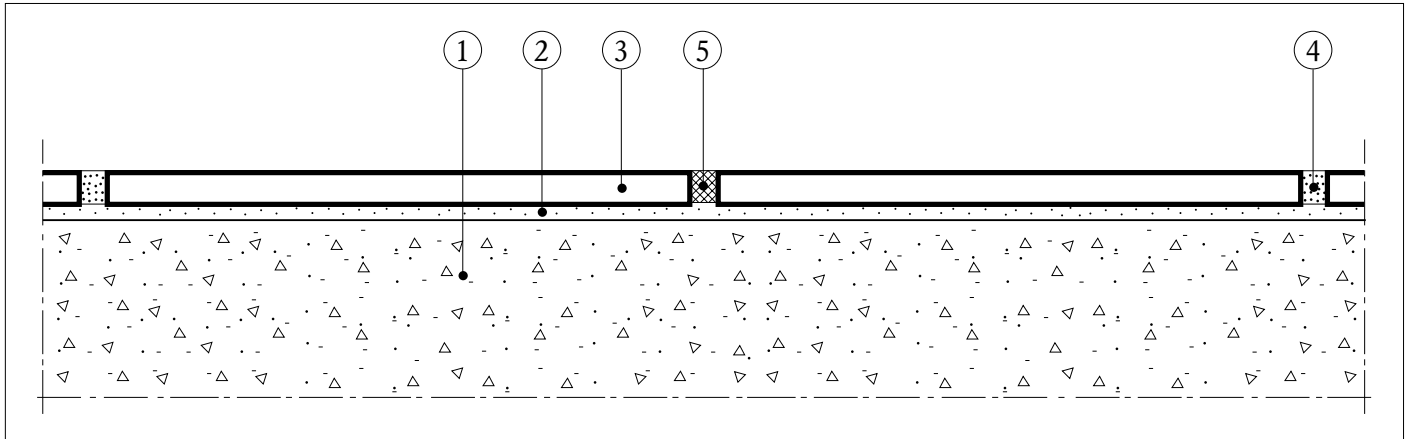


Applications

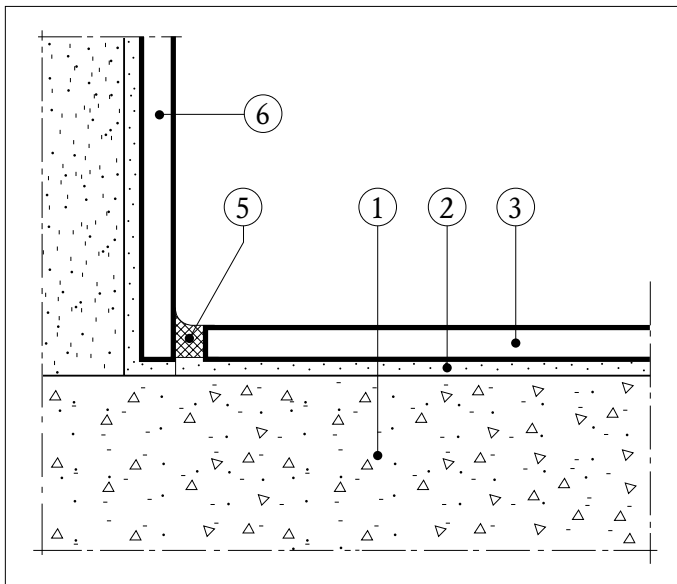
Standard Design, Code G10 is suitable for surfaces where the stresses are of such a kind that usual cement-based adhesives are not recommendable e.g at constructions with residual shrinkage and where big thermal movements are expected: large floor areas,

floor with floor heating, balconier etc. For swimming-pools see special recommendation. The construction is flexible and can therefore resist limited movements in the base. The construction is suitable on concrete.

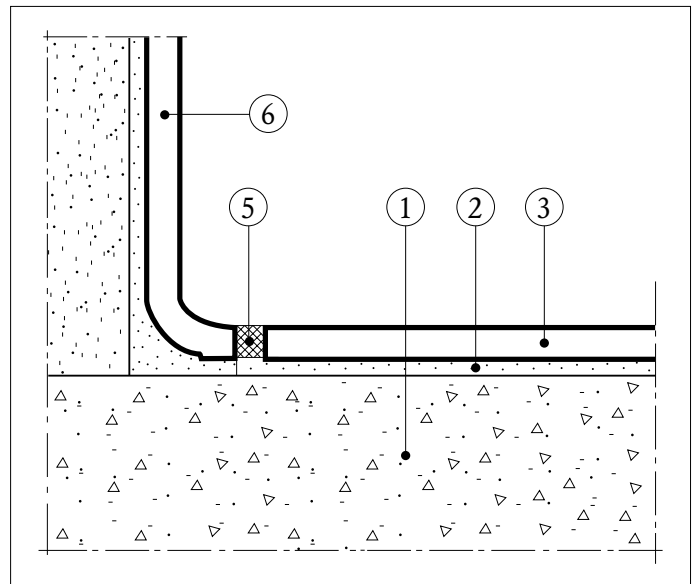
Design



Typical cross-section.



Cross-section through wall/floor.



Cross-section through wall/floor with cove skirting tile.

Legend

- | | |
|----------------|-------------------|
| 1. Sub-floor | 4. Joints |
| 2. Adhesive | 5. Movement joint |
| 3. Floor tiles | 6. Skirting tiles |

1. Sub-floor

The sub-floor should be concrete with a floated surface. **Concrete surface should be at least 1 month old.** The surface must be free from water puddles, dust, grease and oil. The sub-floor should be laid to falls as necessary for any gullies or channels.

2. Adhesive

CC Höganäs FB 2000. When tiling large size tiles $\geq 250 \times 250$ mm the back of the tile must be coated with a thin but fully covering layer of the adhesive prior to the tile being pressed or knocked into the previously applied adhesive (the so called buttering/floating method). Altern. use special toothed spreader FB 88 or FB 125.

3. Floor tiles

Ceramic tiles. Quality and thickness are to be chosen according to the floor loading. Floor tiles for floor heating should have a waterabsorption $E \leq 6\%$.

4. Joints

CC Höganäs ClinkergROUT. For floors subjected to grease use CC Höganäs epoxy-based Habenit 60 alt. Habenit 63.

5. Movement joint

Large floor areas should be sectioned into appr. 40 m² areas and have no more than appr. 6 m sides. The floor lining should be separated by movement joints from walls, columns, foundations etc. As movement joint use CC Höganäs Habenit 53.

6. Skirting tiles

Coved skirting tiles, floor tiles or wall tiles.